

**FREE**

Winter  
2022

# NORTH IDAHO FAMILY

M A G A Z I N E

*Now in its  
23rd year!*

*what's inside:*

**2022 Graduation Countdown**

**Family Day in the Park 2022 Preview**

**Annual Checklist!**

[www.nifamily.com](http://www.nifamily.com)

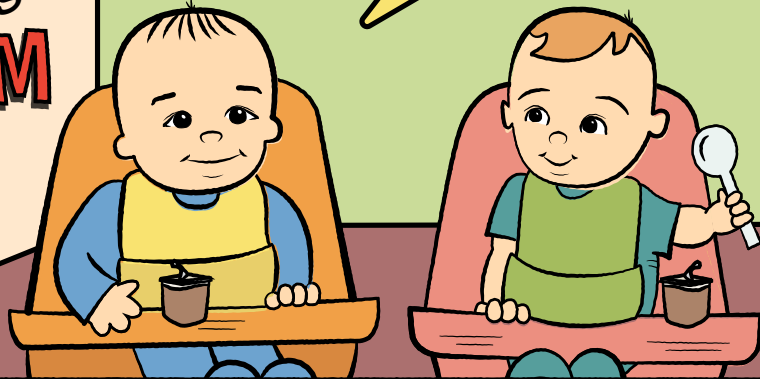


# JOIN PANHANDLE HEALTH DISTRICT'S 3-CALL PROGRAM TODAY!



**Public Health**  
Prevent. Promote. Protect.  
Panhandle Health District

My mommy quit tobacco through the  
Panhandle Health District 3-CALL PROGRAM!



She received **PERSONALIZED QUIT COACHING**, plus helpful tools for quitting like this **QUIT KIT** and nicotine patches, gum, and lozenges.



My daddy quit too! He got this cool word search book and other tools to keep him distracted while he quits...



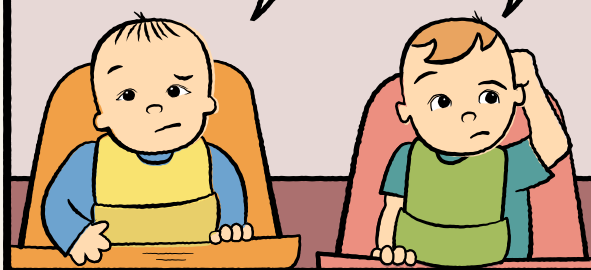
...like:

- PUZZLES
- ORIGAMI KITS
- KNOT-TYING KITS
- JOURNALS & PENS
- COLORING BOOKS

**& MORE!**

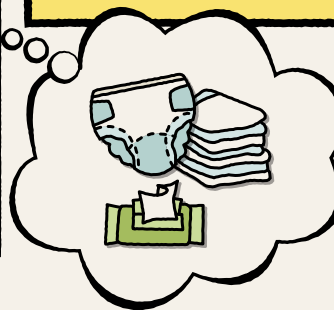
All I got was this lousy bib...

Me too...



**BUT THAT'S NOT ALL WE GOT!**

Now we have **CLEAN AIR** in our homes, **REDUCED RISK** for asthma attacks, respiratory and ear infections, and sudden infant death syndrome...

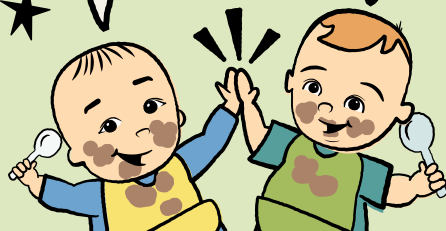


...and we get **FREE DIAPERS AND WIPES too!**

By quitting tobacco and getting free diapers and wipes, our families save

**\$1,375 - \$2,330!**  
per year

...which means more chocolate pudding for us!



**READY TO QUIT TOBACCO?**

**Use the QR CODE**

to visit [panhandlehealthdistrict.org](http://panhandlehealthdistrict.org)

or

**CALL (208) 415-5143**

to register  
or for more information.

## PARENTS, GET A FREE BIB WHEN YOU QUIT!

This ad was made possible by CDC grant NU58DP006796. Its contents are solely the responsibility of the authors and do not necessarily represent the official views of the CDC.



**Public Health**  
Prevent. Promote. Protect.  
Panhandle Health District



For advertising information,  
or item for inclusion  
in the next issue:

**208.699.0126**

[nifamily.com/advertise](http://nifamily.com/advertise)

**[www.nifamily.com](http://www.nifamily.com)**

PO Box 1568

Coeur d'Alene, ID 83816

Email: [sales@nifamily.com](mailto:sales@nifamily.com)

## ACKNOWLEDGEMENTS:

Cover Photo of Ida Snow and Oslo Wolf by Maggie Vogt  
©2022 by North Idaho Family Group, Inc. All rights reserved. No portion of this magazine may be reproduced in whole or in part without the express written consent of the owner, North Idaho Family Group, Inc. Distribution of this publication does not constitute an endorsement of products or services therein. All information is as accurate as given from contributing sources. North Idaho Family Group, Inc. reserves the right to refuse advertising or submissions for editorial purposes for any reason. Copies are free.

## the Group North Idaho Family Scoop

The North Idaho Family Group has re-tooled our communication to area nonprofits to focus on more direct, relevant, educational information for area nonprofits and North Idaho Family Group members, supporters and partners. *That's The Scoop!*

Sign up today at [www.nifg.org](http://www.nifg.org)

# Welcome!

For over 23 years the North Idaho Family Magazine and its companion website, [nifamily.com](http://nifamily.com) have provided:

- Hundreds of local features on things that matter to North Idaho families.
- The N.I.C.E. calendar for charitable events planning.
- Connections through social media.

## North Idaho Family Group:

The North Idaho Family Group is a 501(c)3 nonprofit organization whose mission is building healthy families and lifelong learning in our community, predominantly by being a backbone organization for other area nonprofits and projects, in addition to its own products and services.

## What We Do

- Family Day in the Park
- North Idaho Services Directory
- Education Information Center
- Group Scoop Newsletter
- North Idaho Family Facebook Group

## SAVE THE DATE:

**June 10: Family Day in the Park**  
**FREE participation.**  
**Information on page 10**

## North Idaho Nonprofits: GET CONNECTED!

### Join the North Idaho Family Group

For your \$100 annual investment you will receive:

- A 250 - word article in up to three issues (Preference for articles is always given to Members)
- FREE vendor booth at Family Day in the Park
- One-time \$150 gift certificate toward an ad or ad program
- Member Directory listing in magazine, and a link on [www.nifg.org](http://www.nifg.org)
- Exposure in The Group Scoop & Social Media
- Inclusion in NIFG collaborations and events

## How to Join

- Online: Visit [www.nifg.org](http://www.nifg.org) and click "Join Now"
- Email: [Members@nifamily.com](mailto:Members@nifamily.com)
- Call: 208-699-0126

## CONTENTS



pg.  
**6**

### North Idaho Family Magazine KIDS!



pg.  
**8**

### Family Day in the Park Preview



pg.  
**16**

### 25 Fun Things to Do this Winter

Indoor and outdoor activities for winter time.



**TECH CORNER 5**



**COMMUNITY 6**



**EDUCATION 10**



**HEALTH 13**



**FAMILY 16**



**CALENDAR 17**



**PEACE & JOY 19**



# Annual “Must Do” List

It's not too late to complete this annual “to do” list to keep your year on the right track and help you avoid costly, frustrating, or time consuming misses.

## Check your Credit Score:

Most online sources give you one annual check for no charge. Do your homework first to understand what the score means, what action you need to take if you think there are mistakes, and how to keep track of the report. Review your monthly budget for the year as well.



## Check your Insurance Coverages:

It is important to review your policies periodically, especially with skyrocketing construction costs ... The reason behind this is to ensure that you continue to have adequate protection for the future and to safeguard your income earning abilities despite all the life changes you may go through.

## Check for Expiration Dates:

- Check your drivers license and make sure it doesn't expire within the year, and that all information is current. Take action early to make corrections and avoid unnecessary fines and fees.
- Check your vehicles license plate tags and insurance cards. Make sure they're current and that you know when they are due to renew.
- Check your credit/debit card(s) for expiration dates to assure any auto pay items associated with them are not interrupted. Also, assure any accounts that have automatic renewals (clubs, memberships, magazines, etc.) are ones you still use, and cancel those you don't want.
- Check payment apps (CashApp, Venmo, etc.) and digital payment cards for expirations, balances, etc.

\*This form is good for one calendar year only.

**APPLICATION FOR ABSENT ELECTION'S BALLOT**

Date: February 15, 2022

OFFICIAL USE ONLY  
Print # \_\_\_\_\_  
Log Dist # \_\_\_\_\_  
Code: W M C T

I,                     , hereby make application for an absent election's ballot or ballots to be voted at the election held on: (Check election this application is to be used for)

☒ 2nd Tuesday in March (School Board or Levy) ☐ Last Tuesday in August (School Board or Levy)  
☐ 2nd Tuesday in May (Primary Election and/or Young Citizens Elections) ☐ Tuesday following 1st Monday in November (General Election and/or Young Citizens Elections)

☐ Special Emergency Election to be held on \_\_\_\_\_

My home address is:                      in Coeur d'Alene  
(House Number and Street) (City)

and I am duly registered in Kootenai County, Idaho.

Please mail ballot(s) to me at the following address:

Daytime phone:                      Your Phone (In case we need to contact you with questions)

Your Name                       
(Please print)

Your Address                       
(Mailing Address)

Your City, State, Zip                       
(If City, State and Zip Code)

Email Address:                      Your Email

KOOTENAI COUNTY ELECTIONS  
P.O. BOX 9000  
COEUR D'ALENE, ID 83816-9000  
PHONE: (208) 446-1030  
FAX: (208) 446-2184 EMAIL: kcelections@kcgov.us

ELECTOR MUST PERSONALLY SIGN APPLICATION  
                      
Your Signature (If Ballot)

## Send in your Absentee Ballot Request:

Vote from home, easily, and on time. A request for absentee ballots that cover all elections in the current year are available online. See sample here. Mail to the elections office and they will send your ballot in the mail prior to each election. Note: this must be redone every calendar year. Go to [kcgov.us](http://kcgov.us) > elections > absentee ballot.

## Update your calendar with Registration Deadlines:

Summer camp registrations, schools, scholarships, sports teams, tournaments, and any other activities that have limited space and requirements to register in advance.



## Schedule your Annual Check Ups:

Make a check list of dates your entire family is due for appointments and schedule them at one time (when possible). Avoid missing a dental check up, mammogram, or childhood immunization appointments. A year can go by quickly!



## Block out Special Events:

Make note and plans for upcoming holidays, special birthdays, or graduations to avoid being caught unprepared when the occasion arrives.





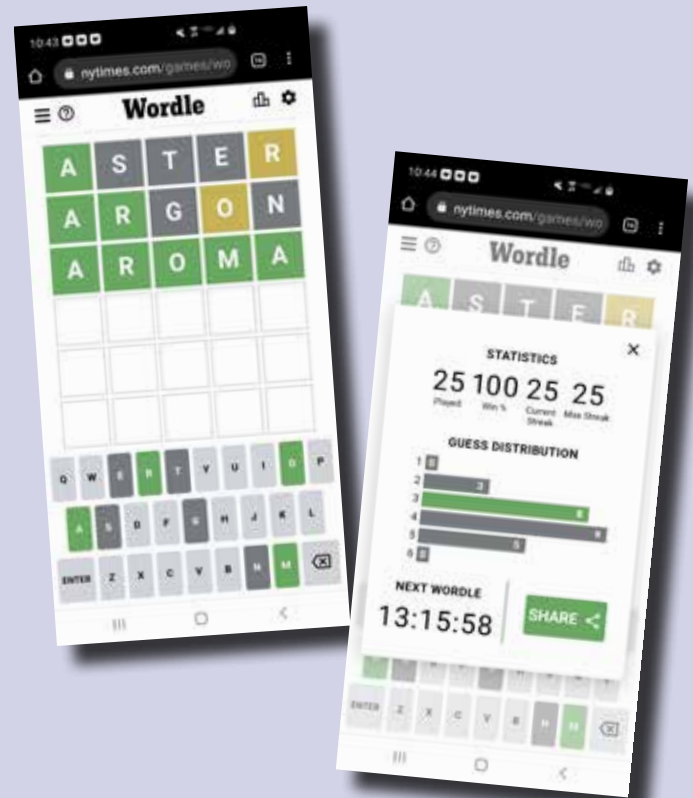
# What in the WORDLE?

The game started as a small project for developer Josh Wardle's friends and family. He set it up online to be played for free on any computer or mobile device. That means Wordle is not an app. So, if you're looking for it in the App Store, you're in the wrong place.

The rules are simple. Players have six guesses to discover the five-letter mystery word of the day. If a green letter appears on the screen, it means that letter is in the word and in the correct spot. If a letter appears in yellow, it means it is in the word but in the wrong spot. If a letter turns gray, that means it's not part of today's word and can be disregarded.

Part of what makes Wordle a viral hit is that it can only be played once a day. A new puzzle is generated every 24 hours, and every person in the world gets the same word to solve. Once they uncover the word of the day, players can share a graphic of their colored-square guesses to show off how well (or poorly) they performed. The words are not displayed, so the green, yellow, and gray squares popping up all over social media feeds continue to generate excitement for the simple game.

Source: [www.wordgenius.com/what-is-wordle-and-how-do-you-improve-your-score](http://www.wordgenius.com/what-is-wordle-and-how-do-you-improve-your-score)



# Life is a Highway!



Watch more about it here!

[www.youtube.com/watch?v=8Fn\\_30AD7Pk](https://www.youtube.com/watch?v=8Fn_30AD7Pk)

This is how the US interstates are numbered!

Those with 2-digits traverse the entire country.

If they end in "0" they run East-West (10, 20, 30, ...).

If they end in "5" they run North-South (5, 15, 25, ...).

Even are east to west, odd are north to south.

Numbers in between reflect their direction. 64 is EW, 77 is NS. etc.

Those with 3-digits are bypasses and contain the last 2 digits of the interstates they bypass.





# NORTH IDAHO FAMILY KIDS! MAGAZINE



The Drake Kids



The Connolly Kids building snow tunnels!



The Ansel Brood

We are excited to continue our North Idaho Family Magazine KIDS! feature - Local kids, doing local activities, having fun, learning, making stuff, etc. We'll feature 3-4 kids in each issue, chosen from social media, messages to [facebook.com/NorthIdahoFamilyMagazine](https://www.facebook.com/NorthIdahoFamilyMagazine), etc.





## Our Community AT A GLANCE



### COEUR D'ALENE SUMMER THEATRE HIRES NEW DIRECTOR

Coeur d'Alene Summer Theatre hires Ethridge to serve as Executive Artistic Director.

The announcement comes as the theater gears up for its first full season since the stage went dark due to the COVID-19 pandemic. Ethridge served as the Associate Artistic Director beginning in late 2018, and was moved to the Executive Director role during the latter part of the theater's two-year hiatus. Much of the work he performed was on a volunteer basis.

In his new paid, full-time position, Ethridge is tasked with fundraising, managing the theater's business operations and overseeing the artistic direction and production. Ethridge has been a lifelong performer and had his first role in a professional musical at the age of 19.

### NONPROFITS ARE HIRING!

- EMERGE: Program Coordinator - [emergecda.com](http://emergecda.com)
- Hospice of North Idaho: Multiple staff positions - [hospiceofnorthidaho.org](http://hospiceofnorthidaho.org)
- Museum of North Idaho: Programs Director, Board Member, Events Committee - [museumni.org](http://museumni.org)
- Idaho Drug Free Youth: Youth Staff, Adult Staff, i-Team Members - [idf.org/staff](http://idf.org/staff)
- Tesh, Inc: Multiple positions - [teshinc.com/jobs](http://teshinc.com/jobs)



COEUR D'ALENE  
SUMMER THEATRE  
PROFESSIONAL MUSICAL THEATRE



JULY 1-10



JULY 22-31



AUGUST 12-21

# 2022 SEASON

get tickets at [cdasummertheatre.com](http://cdasummertheatre.com)

Idaho's Oldest Performing Arts Organization since 1967



*Save the Date!*

**June 10, 2022**  
**City Park & Beach**  
**Downtown Coeur d'Alene**  
**[familydaycda.com](http://familydaycda.com)**

**JUNE 10, 2022 NOON TO 6pm-ish**  
**IN COEUR D'ALENE CITY PARK**

Annual Last Day of School Family Fun Celebration!

EVENTS AND ACTIVITIES SUBJECT TO CHANGE

Free • Free • Free • and mostly Free!!!!

2022 Fark is being  
planned! Current  
Covid protocols will be  
followed

- 100s of nonprofit, community, and business vendors
- Shop local Vendors at the North Idaho Family Marketplace
- Bandshell Entertainment
- Nonprofit outreach
- Activity booths
- Multiple give-a-ways
- Food Court and beer Garden
- Bounce Houses
- Cultural Center Presentations
- Fire engines, police cars and interactive heavy equipment
- FREE Books, face painting and more
- Encore stage performances all day
- Swag Bags

OFFICIAL WEBSITE: [FAMILYDAYCDA.COM](http://FAMILYDAYCDA.COM) FACEBOOK: [FACEBOOK.COM/CDAFAMILYDAYINTHEPARK](https://www.facebook.com/CDAFAMILYDAYINTHEPARK) PHONE: 208-699-0126







## 2022 Family Day in the Park Sponsorship Opportunities

**ATTENTION VENDORS, NONPROFITS, CIVIC GROUPS :: SAVE THE DATE! - JOIN US FOR THE PREMIER, OLD FASHIONED FAMILY FUN EVENT IN THE REGION.**

Averaging 4,000-5,000 attendees annually, the 2022 event promises to be bigger and better. Contact us for vendor, volunteer, sponsor or organization participation and planning information. (Applications are typically online in late February.)



- ☐ **Title Sponsorship** (*EXCLUSIVE. Includes but not limited to: Activity Sponsor benefits plus company name title, listing on event banner at park, additional ad in winter issue, cover page listing on Event Program*)
- ☐ **Activity Sponsor** (*Includes but not limited to: Major benefits + banner at event activity, recognition/signage in all event marketing*)
- ☐ **Major Sponsor** (*Includes but not limited to: Partner benefits plus ad in Event Program*)
- ☐ **Partner** (*Includes but not limited to: Supporter benefits + logo in program*)
- ☐ **Supporter** (*Includes but not limited to: listing in magazine and announcement at event*)
- ☐ **Vendor** (*non-member*)

### SPONSORSHIP/VENDOR INFO:

OFFICIAL WEBSITE: [FAMILYDAYCDA.COM](http://FAMILYDAYCDA.COM) FACEBOOK: [FACEBOOK.COM/CDAFAMILYDAYINTHEPARK](https://FACEBOOK.COM/CDAFAMILYDAYINTHEPARK) PHONE: 208-699-0126

## Advertise in the North Idaho Family Magazine!

Is your business looking for a unique, niche distribution to thousands of North Idaho Families? It is the **ONLY** magazine that goes home in the backpacks of the kids at schools (vs. just a rack location), plus relocation services and other outlets.

Your advertising supports not only the magazine, but multiple other programs and projects of the North Idaho Family Group nonprofit ([nifg.org](http://nifg.org)) ... so you're really helping over 100 nonprofits in North Idaho!

## Did You Know?

### NIFG Provides Outreach & Support to 100s of Nonprofits and the Clients they Serve

- **Family Day in the Park:** 100s of Vendors, Reach thousands of families
- **Education Information Center:** Pre-K through Retirement Education resources for all of North Idaho
- **North Idaho Family Magazine:** 23 years, distributed to 8,000+ Elementary School Students in Kootenai County
- **North Idaho Services Directory:** THE MOST COMPREHENSIVE, LOCAL DATABASE OF IMMEDIATE AND BASIC NEEDS SERVICES.
- **North Idaho Charitable Events (N.I.C.E.) Calendar:** Most comprehensive list of local Fundraisers
- **The Group Scoop:** "Bite-Sized" news and informative topics for nonprofits and the community.
- **The North Idaho Family Magazine Facebook page & Group:** [facebook.com/NorthIdahoFamilyMagazine](https://facebook.com/NorthIdahoFamilyMagazine) [facebook.com/groups/northidahofamily](https://facebook.com/groups/northidahofamily) - to share community information to families & organizations



## Important deadlines for 2022 High School Seniors

NOW is the time to apply for financial aid & scholarships for the 2022/2023 school year. Federal, State, and individual college deadlines vary widely. Most counselors recommend applying for federal financial aid with the FAFSA even if you think you won't qualify, or you think you won't need the aid.

- 2022/2023 FAFSA (Free Application for Federal Student Aid) is available NOW (FAFSA.ed.gov – Make sure to use THIS site to apply).
- Early 2022: Deadline for CSS / Financial Aid PROFILE Application (found at CollegeBoard.org)
- March 1, 2022: Idaho Deadline for applying for an Opportunity Grant. (A Federal Supplemental Educational Opportunity Grant (FSEOG) is a grant for undergraduate students with exceptional financial need.)
- February, March, & April are the main scholarship deadline months. Visit [edinfocenter.cda.com/](http://edinfocenter.cda.com/) Pay-for-School/ North-Idaho-Scholarships for local & regional scholarship opportunities.
- Contact your student's potential colleges to find out about school-specific scholarship opportunities and financial aid deadlines.

Don't wait! FAFSA changed in 2017 so that students now use "prior-prior" year tax information when reporting personal & family income. It is better to start the process than to wait and risk missing deadlines.



*Home Loans With The*  
**#1 COMMUNITY BANK**  
*IN THE NATION 2019, 2020 & 2021\**

**CONVENTIONAL • REFINANCE • FHA • VA  
USDA/RURAL • JUMBO • CONSTRUCTION  
DOWN PAYMENT ASSISTANCE**



**Willamette Valley Bank**

*Where Local means Something.*

\*American Banker Magazine Reports. All rights reserved. Subject to qualifying credit approval.  
Member FDIC. Equal Housing Lender. NMLS# 713109

*Financing Provided By*



**MARVIN SEARS**  
**208.699.1585**

Loan Officer | NMLS# 1904574






BRING CONNECTIONS  
**TO LIFE**

TDSFIBER.COM | 1-855-259-8575

1 GIG INTERNET | TDS TV+ | PHONE  
**FOR YOUR HOME**



TDS Fiber services not available in all areas. See website for details. TDS® and TDS TV+ are registered trademarks of Telephone and Data Systems, Inc. Copyright © 2021, TDS Telecommunications LLC. All Rights Reserved. 2048744-0-2/1/2021

**5 SCHOOLS.  
1 LOCATION.**

Looking to advance your career?

Visit us today at 1 location  
in Coeur d'Alene

Visit [NorthIdahoHigherEducation.org](http://NorthIdahoHigherEducation.org)  
to Learn More.

 North Idaho College

 University of Idaho  
Coeur d'Alene

 LEWIS & CLARK  
STATE COLLEGE  
COEUR D'ALENE

 Idaho State  
University

 BOISE STATE UNIVERSITY

## LOOKING FOR THE BEST SCHOOL IN KOOTENAI COUNTY?

### LOOK NO FURTHER!

#### COEUR D'ALENE CHARTER ACADEMY

is ranked among the top schools in the state, we have been providing a **FREE** college preparatory education to Kootenai County students in grades 6-12 since 1999!

**Apply Now! Priority Application  
Deadline for 2022-2023 is  
Friday, March 11 @ 4:00 PM!**  
[cdacharter.org/apply](http://cdacharter.org/apply) – or scan the QR code!



4904 N DUNCAN DRIVE  
COEUR D'ALENE, ID 83815  
[WWW.CDACHARTER.ORG](http://WWW.CDACHARTER.ORG)

LOCATED OFF KATHLEEN AVENUE  
ACROSS FROM FRED MEYER, BETWEEN  
HIGHWAY 95 & RAMSEY.





# Making Music Matters

For years experts have been touting how music aids in the brain development of young children, even infants. But there's more to it than simply allowing a child listen to music, letting the notes wash over them.

Neuroscientists have proven again and again that actively learning to play an instrument, any instrument, has a great impact on developing fine motor skills, forcing connection between the two separate hemispheres of the brain, learning math and language, increases coordination.

Nina Kraus is the director of Auditory Neuroscience Laboratory at Northwestern and co-authored a study on just such a connection. In an interview with TIME Magazine, she said, "It is only through the active generation and manipulation of sound that music can rewire the brain." According to their study's findings, there is a literal biological change that happens in students who actively participate in learning an instrument.

The benefits go beyond just brain help. Learning an instrument in a group atmosphere develops relationships with peers, can improve social skills, and in the case of some of our own students, creates a stronger bond between parents and their children.

At North Idaho Rock School, they have had at least half a dozen parents learn an instrument alongside their children, fostering a new aspect of their relationship that may not have existed before. Knowing how important these connections are, they happily take students as young as three into their Tiny Tunes group class, which introduces musical and rhythmic elements among games and coloring. They have rock bands made up of four and five year olds who are already playing together as a cohesive musical unit. They give people of all ages a place to create, a place to belong, and a place to build new friendships that, they hope, will last a lifetime.



INFO

northidahorockschool.com  
208-987-3017

## Your Choice, Your Hospice

**Hospice of North Idaho is here to provide information and education about our unique care, including palliative care, hospice care and grief support.**

*Call to speak with us today!*  
**(208) 772-7994**



**WWW.HOSPICEOFNORTHIDAHO.ORG**







**New Patients Welcome**  
We Specialize in Pediatric and Adolescent Care.



Check out our Online Patient Services at  
[www.cdapeds.com](http://www.cdapeds.com)



Evening and Saturday Clinic Available  
**3 Locations to serve you!**  
700 W. Ironwood Dr, Coeur d'Alene – 667-0585  
1300 E. Mullan Ave, Post Falls – 777-1330  
9095 N. Hess St, Hayden – 772-8940



**SWIM WITH US ALL YEAR**

Learning to swim doesn't happen overnight!  
Get in the pool NOW to prepare for  
all your water adventures.

**3810 N Schreiber Way**  
**Coeur d Alene**  
[safesplash.com](http://safesplash.com) | [swimlabs.com](http://swimlabs.com) | (208) 448-7979

## Patients first.

At Northwest Family Medicine, we understand you want someone you can trust to care for your loved ones as much as you do. We put patients first because that's what we would want for our families, too.

**Dr. Heidi Herold is Accepting New Patients!**



**(208) 209-2066**



Family Medicine



*A Seafood Lovers Dream*

*Any fresher... You'll have to catch it yourself!*



- 12 Choices of Fish & Chips
- Fun Seafood Menu
- Poke Bar
- Fresh Fish Daily
- Soups & Salads
- In-house Smoked Fish

215 W. Kathleen Ave • Coeur d'Alene • 664-4800  
Between Super 1 Foods and Home Depot • Tuesday - Saturday 11am - 8pm

Coming in 2022, New Hayden Address  
at 8056 N. Wayne Drive



**Serving Our Community Since 2001**

We offer No-Cost Services to Clients

**You're Not Alone**  
*We Can Help*

208.667.5433



- Pregnancy Tests
- Limited Ultrasound
- Options Counseling
- Educational Support Groups
- Open Arms Outfitters, A Children's Boutique

RealChoicesClinic.com  
info@realchoicesclinic.com



**Shriners Hospitals**  
for Children®— Spokane

## URGENT PEDIATRIC FRACTURE CLINIC

Monday- Friday  
7 a.m. - 10 a.m.

**888-895-5951**  
**ShrinersSpokane.org**





# Take Heart

## PREVENTING HEART DISEASE CAN EXTEND YOUR LIFE

In the last 40 seconds, about the time it took you to settle in with a cup of coffee to read this article - someone in the United States died.

Most likely they had a massive heart attack. Their death likely could have been prevented if they had adopted just four basic lifestyle choices, says Dr. Anthony Rehil-Crest, Chief Clinical Officer for Heritage Health.

"I tell my patients to choose a healthy diet, maintain a healthy weight, get regular exercise and don't smoke cigarettes," says Rehil-Crest. "The most effective thing we've done over the last five years is to convince more and more people to stop smoking cigarettes. It's one of the biggest risk factors for heart disease."

Heart disease is the leading cause of death for men and women in the United States. About 659,000 people in the United States die from heart disease each year—that's one in every four deaths.

"There are advances in medications to prevent heart disease that are being made every year," said Rehil-Crest. "We are continually developing medications that control cholesterol and blood pressure."

Many people wonder how they can avoid a fatal heart attack.

Rehil-Crest notes that decreasing your risk for heart disease is all about identifying your risk factors and managing those risk factors if you can.

"Some risk factors like a family history of heart disease you can't control," he says. "So depending on when your mother or father got heart disease can change the time that your doctor starts to check you for other risk factors. Risk factors that contribute to heart disease that we often can control are high blood sugars, high blood pressure, high cholesterol and obesity. These factors are measured throughout your lifespan and controlling them early in life can decrease your risk of a heart attack later in life."



INFO

[myheritagehealth.org](http://myheritagehealth.org)  
208-620-5250

## Give Your Heart A Little Love

Up to  
**80%**  
of heart disease  
is preventable.

**We Can Help.**  
Accepting new patients



208.620.5250 | [myheritagehealth.org](http://myheritagehealth.org)







# 25 Fun Things to do with Kids

tear out and save

- 1.** Create colored ice spheres! Fill water balloons with water and food coloring. Leave outside to freeze and then peel the balloon off of the colored ice and line your sidewalk or driveway.  
  
Photo by Wendy Harris
- 2.** Do all the holiday puzzles in this issue! The Valentine maze, the St. Patrick's Day Word Search, and the Easter "Find the Differences!"
- 3.** Watch the eagles at Wolf Lodge Bay and Beauty Bay. It's a local treat from December through February.
- 4.** Bundle up & go sledding! Designated Sledding Destinations:  
Cherry Hill - near the fire station off 15th Street  
Lost Avenue - Dollar Street to 15th Street  
South Dollar Street - The area south of Sherman Avenue  
Boyd Avenue - 9th Street to 10th Street  

- 5.** Have a Baked Potato party! Make chili, shred cheese, and have sour cream, butter, chives, bacon bits and other toppings. Everybody can put on their own toppings!  

- 6.** Time flies so get a jump on college planning! Sit down with your kids and talk about college and the future - Make a plan, including a list of questions. Visit [edinfocenter.cda.com](http://edinfocenter.cda.com) for ideas.
- 7.** Bundle up and take a walk along the Centennial Trail or around Tubbs Hill.
- 8.** Enjoy a family bowling night at Sunset Bowling or Triple Play.
- 9.** Plan your fantasy summer vacation - Check out warm weather websites and magazines, and plan a future getaway with friends and family.
- 10.** Learn how to knit or crochet and then make your friend a hat or scarf!  

- 11.** Search "Winter Kid Activities" on Pinterest and find out how to make FROZEN Erupting Snowballs, a Snow Storm in a Jar, or Crystal Suncatchers.
- 12.** Go have a JUMP DAY at Jump for Joy in Dalton.
- 13.** Make Snow Cream! (Be sure to use CLEAN snow!!) Use 1 gallon of snow, 1 cup white sugar, 1 tablespoon vanilla extract, and 2 cups of milk. Mix and enjoy!
- 14.** Make a Shamrock Smoothie for St. Patrick's Day. Combine frozen sliced bananas, 2 cups of honeydew melon chunks, 2 kiwi fruits peeled and cut into chunks, 1 cup frozen vanilla yogurt, and 1/2 cup of tightly packed parsley leaves.  

- 15.** Hit the slopes at Silver, Lookout Pass or Schweitzer Mountain. Free Ski/Snowboard lessons at Lookout Pass! Before you go, compare the mountains online. How much snow? What is their altitude?  

- 16.** Learn about Geocaching ([www.geocaching.com/guide](http://www.geocaching.com/guide)) - They're like a combination of a treasure hunt and a scavenger hunt - and then find Geocaches near you.
- 17.** Have a camp out in the living room complete with microwave S'mores.
- 18.** Take a swimming lesson at SafeSplash (Opening Soon!)
- 19.** Go on an "art walk" around downtown galleries. Have your kids choose which painting or sculpture they like best. Ask them why they like it.
- 20.** Make homemade Valentine's Day Cards for your mom, dad, or grandparents.
- 21.** Channel your inner geek - Check out "Hour of Code" at [www.khanacademy.org](http://www.khanacademy.org) or [www.code.org](http://www.code.org). Ages 6-106.  

- 22.** Go watch a basketball game at North Idaho College. Visit [nicathletics.com](http://nicathletics.com) for team schedules.
- 23.** Have a "Tech-Free" Weekend ... Read books, watch a classic movie, play games!
- 24.** Get ready for race season! Start with the Hauser Lake 10K Ice Breaker Run!
- 25.** Make Hot Cocoa from scratch.  




# Project Neighborly

The Idaho Community Foundation is proud to launch an effort to foster inclusion and inspire neighborliness in local communities. Inspired by the Whatcom Community Foundation, Project Neighborly is a grant program that encourages all of us to become better neighbors and create welcoming communities. You come up with the ideas, and a Project Neighborly grant will help bring those ideas to life.



INFO

[www.idahocf.org/community-impact/project-neighborly-idaho](http://www.idahocf.org/community-impact/project-neighborly-idaho)

## 10 WAYS TO GET INVOLVED IN YOUR COMMUNITY



- 1) Attend a city council meeting
- 2) Contact your local representatives
- 3) Vote
- 4) Volunteer for a local organization
- 5) Organize a local green space cleanup
- 6) Plant a tree
- 7) Organize a food drive
- 8) Take a first-aid class
- 9) Shop local
- 10) Encourage your friends to get involved



[www.civicengagecda.com](http://www.civicengagecda.com)

VISIT NIFAMILY.COM FOR THE MOST UP-TO-DATE CALENDAR.

- Feb 10** 4th Annual Care Affair for CDAide
- Feb 11** The Sweetheart Ball for Habitat for Humanity
- Feb 11** Downtown Coeur d'Alene Chocolate Affair
- Feb 11** 2nd Friday Artwalk in Downtown Coeur d'Alene
- Feb 23-25** Safety Fest of the Great Northwest @ NIC WTC and online
- Mar 4-6** Home & Garden Show at the Fairgrounds
- Mar 11** 2nd Friday Artwalk in Downtown Coeur d'Alene
- Mar 11** Dine & Dance Dinner Auction for CCS @ Best Western CDA Inn
- Mar 12** St. Patrick's Day Parade @Downtown Coeur d'Alene
- Mar 12** Viking Booster Auction
- Mar 19** CCA Royal Raffle Benefit Ball @ Hagadone Event Center
- Mar 23** Port Falls Chamber Reverse Job Fair
- Mar 25** Guns and Hoses Event by Battle of the Badge @ Frontier Ice Arena
- Apr 8** Ceramic Showdown Throw Down @ Emerge
- Apr 8** 2nd Friday Artwalk in Downtown Coeur d'Alene
- Apr 9** CDA Charter Partners in Education Gala @ Hagadone Event Center
- May 2-5** Idaho Gives
- May 13** 2nd Friday Artwalk in Downtown Coeur d'Alene
- May 20** 11th Annual Cowboy Ball @ Kootenai County Fairgrounds
- May 29** Coeur d'Alene Marathon
- June 10** Family Day in the Park & NI Family Marketplace @ CDA City Park

## North Idaho Charitable Events Calendar

FREE



Visit  
**[www.nifamily.com](http://www.nifamily.com)**  
for a complete list of  
community events.





# Fun with Puzzles!

## ST. PATRICK'S DAY WORD SEARCH



## 2022 Summer Camps

The North Idaho Family Magazine has listed summer camps for over 20 years!

If you are involved with an organization, church, or school that has a summer camp and know your plans, let us know!

Visit [nifamily.com/north-idaho-summer-camps](http://nifamily.com/north-idaho-summer-camps) for list of camps and updates.

## Check out Tech & Fun at Your Local Libraries!

### All Ages

Check out a Chromebook or Hotspot! Visit [tinyurl.com/communitylibrarynetwork](http://tinyurl.com/communitylibrarynetwork)!



### Teens

Subscribe to a Teen Zone Take-Out Book Box service at <https://tinyurl.com/cdateenbookbox>

#### WHAT'S IN THE BOX?

2 LIBRARY BOOKS  
BASED ON YOUR CHOICES

A CRAFT

A SMALL GIFT



**RETURN THE LIBRARY BOOKS.**

THE REST IS YOURS TO KEEP!

## EASTER EGG HUNT... FIND 10 DIFFERENCES



Solutions on page 20



# A Little Love Can be a Big Thing

A sweet young couple, newly engaged, came in for a pregnancy test. Much to their surprise, she was 24 weeks along. Although the pregnancy was unexpected, the couple embraced the news and made plans to continue coming to Open Arms for support.

When they returned for pregnancy and parenting classes, they announced to us that they decided to get married right away rather than waiting until the following year as planned. With the love and support they received from Open Arms, they were able to overcome their fear of the unexpected and to begin their little family.



Fast forward to today. This little family has come back in town twice since their move, out of town and every time they have stopped by to say hello and to show their love and appreciation. We sure do love and appreciate them.

The last time they visited, the dad told us that he had been so blessed by our support of their family that he was looking into starting an outreach for young families in their new little town, because they understood first-hand how difficult unexpected pregnancies can be, and how loving support can make the experience so much easier.

As time went on and the baby was born, the couple experienced the challenges of a new marriage along with the challenges of taking care of a newborn.

INFO

Submitted by T. Pauls - [realchoicesclinic.com](http://realchoicesclinic.com)



## SENIORS

### SENIOR COMPANION PROGRAM IN NEED OF VOLUNTEERS!

Panhandle Health District's Senior Companions Program is in need of volunteers!

Volunteers 55 and older are matched with homebound community members that need support to remain independent.

Volunteers share their experience and knowledge with those in need in their own communities. We serve all five northern Idaho counties. If you are over 55 and interested in being a friend while making a big impact on others, contact Panhandle Health District at 208-415-5177 today to get started!



SENIOR COMPANIONS  
**HAVE A LAUGH**

**FIND A FRIEND**

CALL 208-415-5177





# Advancing Workforce Success Through Child Care Benefits

Studies show that offering childcare benefits is not only an excellent recruitment and retention tool, but can also boost employee productivity and morale, reduce absenteeism and turnover, and inspire greater employer loyalty—and businesses qualify for tax benefits.

In addition, the first five years of a child's life present a critical window for learning and growth and this is exactly the time when quality early childhood education makes a profound difference in a child's life. Yet this pivotal window of opportunity is missed when quality early childhood education is unavailable or unaffordable.

A variety of options are available to employers who recognize the many benefits of investing in child care for their workforce, while simultaneously strengthening the infrastructure of highly qualified providers already established in the local community.

United Way of North Idaho's Early Care and Education (ECE) Task Force can guide you through a solution that is right for your business.

Contact our team to develop a plan unique to your location, workforce, and resources: Employed and/or enrolled in school or a job training program (includes local community colleges, technical programs, high school completion, etc.)

Paying for at least one child in a licensed early care and education program or out-of-school care program.

Apply: <https://www.unitedwayofnorthidaho.org/childcare-assistance>

**DID YOU KNOW?**  
 You can increase childcare subsidies as childcare benefits.

**DID YOU KNOW?**  
 You can provide on-site childcare spaces and supervision.









**LIVE UNITED**

**INFO**

[unitedwayofnorthidaho.org](https://www.unitedwayofnorthidaho.org)




**Coeur d'Alene's Indoor Inflatable Play and Party Center.**

**Open 7 days a week for Parties and Open Jump. Conveniently located 250 W. Dalton Ave.**

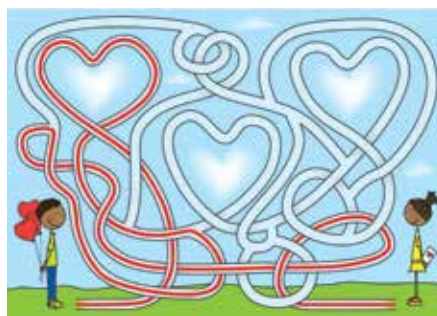
**Kids under 2 are always FREE with paid sibling**

**RENTALS NOW AVAILABLE**

**Visit our website for more info, pictures, and to see our commercial airing on KXLY.**

250WestDaltonAve.|Coeur d'Alene, ID, 83815|208-664-5200|info@jumpforjoycda.com  
www.jumpforjoycda.com

## Puzzle Solutions



F	O	O	D	N	A	L	E	R	I
O	F	L	D	E	R	A	S	G	S
P	O	L	E	M	E	L	O	N	N
H	G	A	L	E	C	D	T	E	
A	N	I	L	L	E	T	I	N	R
R	G	H	P	O	I	A	S	E	L
O	E	S	A	T	R	O	N	P	R
A	G	N	U	N	U	A	H	C	E
D	D	A	A	C	I	M	U	S	I
H	O	R	A	M	R	U	L	C	C

H	A	S	H	O	E	M	E	P	A
C	R	P	R	E	N	A	D	A	R
L	A	E	P	C	O	V	E	R	
D	Y	P	L	Y	R	T	E	O	P
A	N	T	R	E	O	L	W		
K	O	E	S	W	H	D	R	U	
N	S	E	S	H	I	S	D	I	B
O	P	R	S	A	T	H	A	N	
T	E	N	T	M	E	O	P	T	I
W	O	R	K	R	O	C	K	R	A




Seniors! Parents! Counselors Educators!

# Questions ... ? It's all HERE: **EdInfoCenterCDA.com**

**Links to Regional Education Information  
from Birth through Retirement**

- ✓ Bookmark It
- ✓ Use It
- ✓ Contact us for Help




## Education INFORMATION Center™


**Your Search for Regional Educational Information & Resources is Over!**

### EdInfoCenterCdA.com


**IT'S ALL HERE:  
ANSWERS FROM  
PRE-KINDERGARTEN  
TO CAREER  
TRAINING AND  
BEYOND!**



Sponsored by:



Tutors

Local Scholarships 

Specialty instruction

Dual enrollment

Second career

Recertification

College counseling

News blogs

Professional Tech

Preschool options

Education savings plans

Drivers training

Home school standards

Career planning

Glossary of terms

School district links

## EdInfoCenterCDA.com: 7 years and growing!

The Education Information Center has been up & running for over 7 years, and continues to provide the most comprehensive local Pre-K through Career education links and resources in the region.

- Hundreds of monthly new and return users
- Updated Frequently
- New sponsor involvement available
- On FIRST page of Google results for dozens of regional education-related searches



# MEMBER DIRECTORY

This is a partial list of services provided by members of the North Idaho Family Group and select immediate needs providers. All area codes are 208 unless specified. Visit [www.niservicesdirectory.com](http://www.niservicesdirectory.com) for an ongoing and updated list of North Idaho Immediate & Basic Needs service providers.

## Child/Youth - Services/Support

American Childhood Cancer Organization Inland Northwest | PO Box 8031  
Spokane, WA | 509-443-4162 | [acco.org/inlandnw](http://acco.org/inlandnw)  
Boys & Girls Club of Kootenai County | 925 N. 15th St. | Cd'A  
208-618-2582 | 200 W. Mullan Ave. | Post Falls | 208-457-9089  
[northidahobgc.org](http://northidahobgc.org)  
Boy Scouts of America, Inland NW Council | 411 W Boy Scout Way | Spokane  
Campfire Inland Northwest | 524 N. Mullan | Spokane WA | 509-747-6191  
[campfireinc.org](http://campfireinc.org)  
Guardians of the Children | 2315 N Rebecca St | Spokane WA | 509-998-2535  
[guardiansofthechildren.com](http://guardiansofthechildren.com)  
Girl Scouts of Eastern Washington & Northern Idaho | 509-747-8091  
[gsewni.org](http://gsewni.org)  
Idaho Drug Free Youth | IDFY.org | 664-4339  
Idaho Youth Ranch/Anchor House | 1609 N. Government Way | Cd'A  
667-3340 | [youthranch.org](http://youthranch.org)  
Region 1 Idaho Infant Toddler Program/Regional Early Childhood Committee  
208-882-6904 | [infanttoddler.idaho.gov](http://infanttoddler.idaho.gov)

## Civic/Volunteer

Human Rights Education Institute | 414 Mullan Ave | Cd'A | 292-2359 | [hrei.org](http://hrei.org)  
Civic Engagement Alliance | 414 Mullan Ave | Cd'A | 274-3426 |  
[civicengagementca.com/](http://civicengagementca.com/)

## Crisis Intervention

Emergency, Fire & Police | 911  
Child Protective Services | 1120 Ironwood Drive | Cd'A  
855-552-5437 | [healthandwelfare.idaho.gov](http://healthandwelfare.idaho.gov)  
Children's Village | 1350 W. Hanley Ave. | Cd'A | 667-1189 | [thechildrensvillage.org](http://thechildrensvillage.org)  
ICARE | 201 E. Harrison Ave | Cd'A | 676-1515 | [icareforchildren.org](http://icareforchildren.org)  
Domestic Violence Hotline | 664-9303  
Idaho Poison Control Center | ID | 800-222-1222  
Idaho Suicide Prevention Hotline | 800-273-8255  
Kootenai County Crisis Hotline | 664-1443  
Kootenai County Sheriff | 466-1300 or 911  
National Center for Missing and Exploited Children | 800-843-5678  
Northern Idaho Crisis Center | 2195 Ironwood Court, Suite D  
Cd'A | 625-4884 | [nicrisiscenter.org](http://nicrisiscenter.org)  
Post Falls Police Victim Services Unit | 1717 E. Polston Ave. | Post Falls  
773-1080 | [postfallspolice.com](http://postfallspolice.com)  
Rape Crisis Line | 661-2522  
Safe Passage | 850 N. 4th St. | Cd'A | 664-9303 | [safepassageid.org](http://safepassageid.org)

## Education - Adult

Bank On | [www.bankonidaho.org](http://www.bankonidaho.org)  
North Idaho College | 1000 W. Garden Ave. | Cd'A | 769-3315 | [nic.edu](http://nic.edu)  
North Idaho Higher Education | [northidahohighereducation.org](http://northidahohighereducation.org)  
North Idaho College Workforce Training & Community Education  
525 W. Clearwater Loop, Post Falls | ID | 769-3222 | [nic.edu/wtc](http://nic.edu/wtc)  
University of Idaho | 1031 N. Academic Way, Suite 242 | Cd'A  
667-2588 | [uidaho.edu](http://uidaho.edu)

## Education - Child

Be SMART for Kids | [besmartforkids.org](http://besmartforkids.org)  
Coeur d'Alene School Dist. 271 | 1400 N. Northwood Center Ct.  
Cd'A | [cdaschools.org](http://cdaschools.org)  
Coeur d'Alene Education Partnership | Cd'A | 714-4561 | [cdaep.org](http://cdaep.org)  
The Dance Company | [thedancecompanycd.com](http://thedancecompanycd.com)  
Iris' House Pre-School & Childcare | 410 N 20th St | Cd'A | 667-3785  
KidOne Camps | [kidonecamps.com](http://kidonecamps.com)

KTEC-Kootenai Technical Education Campus | 6838 W. Lancaster Rd.  
Rathdrum | 208-712-4733 | [ktectraining.org](http://ktectraining.org)  
Lake City Figure Skating / Frontier Ice Arena | 3525 W Seltice Way | Cd'A  
603-667-7178 | [lakecityfigureskating.org](http://lakecityfigureskating.org)  
Lake City Highland Dance Inc. | Silver Lake Mall | Cd'A | 771-0828  
[lakecityhighlanddance.com](http://lakecityhighlanddance.com)  
Mountain States Early Head Start | 411 N. 15th St, Ste 200 | Cd'A  
765-6955 | [msehs.org](http://msehs.org)  
North Idaho College Head Start | 411 N. 15th St, Ste 103 | Cd'A  
666-6755 | [nicheadstart.org](http://nicheadstart.org)  
North Idaho School of Rock | [northidahorockschool.com](http://northidahorockschool.com)  
Opening Books, Opening Doors | [openingbooksopeningdoors.com](http://openingbooksopeningdoors.com)  
Quest Academy North Idaho | 6200 W Hayden Ave | Rathdrum |  
[questacademyidaho.com](http://questacademyidaho.com) | 889-8040  
Wired2Learn Academy | 1800 N. Hwy 41 | Post Falls  
[wired2learnacademy.com](http://wired2learnacademy.com) | 699-6232  
North Idaho Robotics Opportunities (formerly Xanterra FLL ) | [facebook.com/XanterraFLL](https://facebook.com/XanterraFLL)

## Family Services

Family Promise of North Idaho | 501 E. Wallace Ave. | Cd'A  
777-4190 | [familypromiseni.org](http://familypromiseni.org)

## Food, Agriculture, Nutrition

Eat Smart Idaho - U of I Extension | [uidaho.edu/extension/eat-smart-idaho](http://uidaho.edu/extension/eat-smart-idaho)

## Government

2-1-1 Idaho CareLine | PO Box 83720 | Boise | 800-926-2588  
[idahocareline.org](http://idahocareline.org)  
Coeur d'Alene Parks Department | 710 E. Mullan Ave. | Cd'A  
769-2252 | [cdaid.org/parks](http://cdaid.org/parks)  
Department of Health and Welfare | 1120 Ironwood Drive | Cd'A  
769-1409 or 2-1-1  
Family Resource & Training Center | 2005 Ironwood Parkway, Suite 200 | Cd'A  
800-745-1186 | [icwrtc.org](http://icwrtc.org)  
Idaho SHIBA / Idaho Department of Insurance | [doi.idaho.gov](http://doi.idaho.gov)

## Healthcare

Abundant Life Surrogacy | Nampa, ID | [abundantlifesurrogacy.com](http://abundantlifesurrogacy.com)  
Aligned Family Chiropractic | 3904 E Mullan Ave STE C | Post Falls | 981-0093  
Evenson Chiropractic | 916 W Ironwood Dr Suite 1 | Cd'A | 769-4800  
First Steps Chiropractic | 8836 N Hess Street Suite E | Hayden | 758-9335 |  
[firststepschiropractic.com](http://firststepschiropractic.com)  
HazelTree Midwifery | 1048 N 3rd St | Cd'A | 699-3625 | [hazeltreemidwifery.com](http://hazeltreemidwifery.com)  
Heritage Health (formerly Dirne) | 1090 Park Place | Cd'A  
292-0292 | [myheritagehealth.org](http://myheritagehealth.org)  
Hospice of North Idaho | 9493 N Government Way | Cd'A | 691-6996 | [honi.org](http://honi.org)  
Kootenai Health | 2003 Kootenai Health Way | Cd'A  
667-3742, PF 619-4100, SP 263-6763 | [kootenaihealth.org](http://kootenaihealth.org)  
Kootenai Urgent Care | Cd'A, Post Falls, Hayden | [kootenaiurgentcare.com](http://kootenaiurgentcare.com)  
Nurse Practitioners of Idaho | [npfinder.aanp.org](http://npfinder.aanp.org)  
Open Arms PCC & Real Choices Clinic | 1800 Lincoln Way #201 | Cd'A  
Panhandle Health District | 8500 N. Atlas Rd. | Hayden | 415-5100  
[panhandlehealthdistrict.org](http://panhandlehealthdistrict.org)  
Peach Orthodontics | [peachortho.com](http://peachortho.com) | 618-5111 | 1145 E Polston Ave, Post  
Falls, ID |  
SafeStart - NISSA | 1130 North 4th Street | Cd'A | 206-548-9290 | [nwsids.org](http://nwsids.org)  
Shriners' Hospital for Children | 911 W. 5th Ave. | Spokane, WA  
509-455-7844 | [shrinershospitalsforchildren.org/spokane](http://shrinershospitalsforchildren.org/spokane)

## Healthcare - Mental

Northern Idaho Crisis Center | 2195 Ironwood Court, Suite D | Cd'A 625-4884 |  
nricrisiscenter.org

Northwest Behavioral Health | 1612 N. 3rd St. | Cd'A | 765-4509

## Misc.

The Art Spirit Gallery | 415 Sherman Ave | 765-6006 | theartspiritgallery.com  
Bean & Pie | beanandpie.com

Christian Youth Theater (CYT) North Idaho | PO Box 3250 | Cd'A | 765-8600  
cytnorthidaho.org

Coeur d'Alene Arts & Cultural Alliance | 105 N 1st St, Suite 100 | Cd'A | 292-  
1629 | artsandculturecda.org

Coeur d'Alene Public Library | 702 E Front Ave, Cd'A | 208-769-2315 |  
cdalibrary.org

Coeur d'Alene Summer Theatre | 4951 Building Center Dr., #105  
Cd'A | 660-2958 | cdasummertheatre.com

Community Library Network | Athol, Harrison, Hayden, Pinehurst, Post Falls,  
Rathdrum, Spirit Lake | communitylibrary.net

DogNIt Hotel & Daycare | 2890 N Government Way | Cd'A | dognit-daycare-  
kennel.business.site/

Elite Auction | PO Box 1354 Hayden 83835 | 208-640-7449  
eliteauctioninc.com

Emerge | 208 N 4th St | Cd'A | 818-3342 | emergecda.org

Melissa Dalton Hunt - A Taste of Newberys | mbhunts1965@gmail.com

Idaho Education News | idahoednews.org

Idaho Public Television | idahopty.org

Innovia Foundation | innovia.org

Jump for Joy | 250 West Dalton Ave | Cd'A | 208-664-5200  
jumpforjoycda.com

Kagey Company | 1048 1/2 N 3rd St | Cd'A | 667-2314

Quest Summer Day Camp @ CDA Nazarene | 4000 N 4th St. | Cd'A | 667-4813  
cdanaz.org

Running Shoes 4 Kids | facebook.com/runningshoes4kids

Safesplash + Swimlabs of Cd'A | safesplash.com/locations/coeur-d-alene-id

The Salvation Army Ray & Joan Kroc Community Center | 1765 W. Golf Course  
Rd. | Cd'A | kroccda.org

Strikezone / VRCDA | teamvsports.com

Victory Alliance Marketing | victoryalliance.us

## Pet & Animal Services

Coeur d'Alene Animal Control | 5500 N. Government Way | Cd'A  
446-1300 | kcsheriff.com/animalcontrol.html

## Religious/Fraternal

First Presbyterian Church | 521 E Lakeside Ave | Cd'A | 1stpresdowntown.org |  
667-8446

Heart of the City Church | 722 W Kathleen | Cd'A | 665-7808 | theheartcda.com

The Vine Church | 9407 N Government Way | Hayden | 449-2080 |  
thevineidaho.org

## Senior Services

Adult Protection Services | 2120 Lakewood Dr. #B | Cd'A | 667-3179

ElderHelp of North Idaho | 9420 Government Way, Hayden | 661-8870  
ehoni.org

North Idaho Home Health | lhcgroup.com/locations/north-idaho-home-health  
Onsite4Seniors | onsite4seniors.org | 967-4771

## Social Services

CAP Community Action Partnership Food Bank | 4144 Industrial Ave., Ste E  
Cd'A | 664-8757 | cap4action.org

Habitat for Humanity | 176 W Wyoming Ave | Hayden | 762-4663

Idaho Dept. of Health & Welfare | 1120 Ironwood Drive | Cd'A |  
healthandwelfare.idaho.gov

St Vincent de Paul | 201 E. Harrison Ave. | Cd'A | 664-3095  
stvincentdepaulcda.org

Union Gospel Mission Center for Women & Children | 196 W Haycraft Ave | Cd'A  
665-4673 | uniongospelmission.org

United Way of North Idaho | 501 E. Lakeside Ave., Ste. 3  
Cd'A | 667-8112 | unitedwayofnorthidaho.org

## Special Needs

Trinity Group Homes, SVPD | 201 E. Harrison Ave. | Cd'A  
664-3095 | stvincentdepaulcda.org

## Substance Abuse-Recovery/Prevention

Al-Anon | Cd'A | 676-0549 | al-anon-idaho.org

Alcoholics Anonymous | 118 N. 7th St., Ste B5 | Cd'A | 667-4633 | aa.org

Idaho Drug Free Youth | 610 W. Hubbard, Ste 123 | Cd'A  
664-4339 | idahodrugfreeyouth.org

Kootenai Recovery Community Center | 405 N 2nd St  
Cd'A | (208) 932-8005 | kootenairecoverycenter.org

## Support Networks/Groups

Operation Second Chance | operationsecondchance.org

Disability Action Center | dacnw.org

Ds Connections NW | dsconnections nw.org |  
3839 W Prairie Ave, Hayden, ID | (877) 733-3955

## NORTH IDAHO SERVICES DIRECTORY

IMMEDIATE NEEDS ♦ BASIC NEEDS ♦ COMMUNITY RESOURCES



**Attention crisis, front-line users, and case managers looking for  
current, accurate immediate & basic needs resources:**

**www.NIServicesDirectory.com**

**Bookmark it now!**

The North Idaho Services Directory is the most comprehensive online list of service providing organizations in the region, with the ability to sort, filter, and search by category, agency name, zip code, city, and other fields.

**Thank you to our Community Supporters**

Kootenai County Sheriff's Department - Heritage Health - United Way of North Idaho - St. Vincent de Paul Coeur d'Alene



# FINISH YOUR DEGREE

Lewis-Clark State College works for working adults



## Coeur d'Alene, Lewiston or Online

- **Flexible:** Study online, in the evening, on the weekend, and move toward your degree at whatever pace works best for you - including online, evening and weekend, 8-week, virtual remote, and portfolio courses.
- **Affordable:** The Idaho Opportunity Scholarship awards eligible applicants up to \$3,500 per year and is renewable for up to four years. Plus, LC State offers the lowest tuition among public four-year institutions in Idaho.
- **Focused:** Specialized programs, services, advising, including transfer-friendly degree options.